

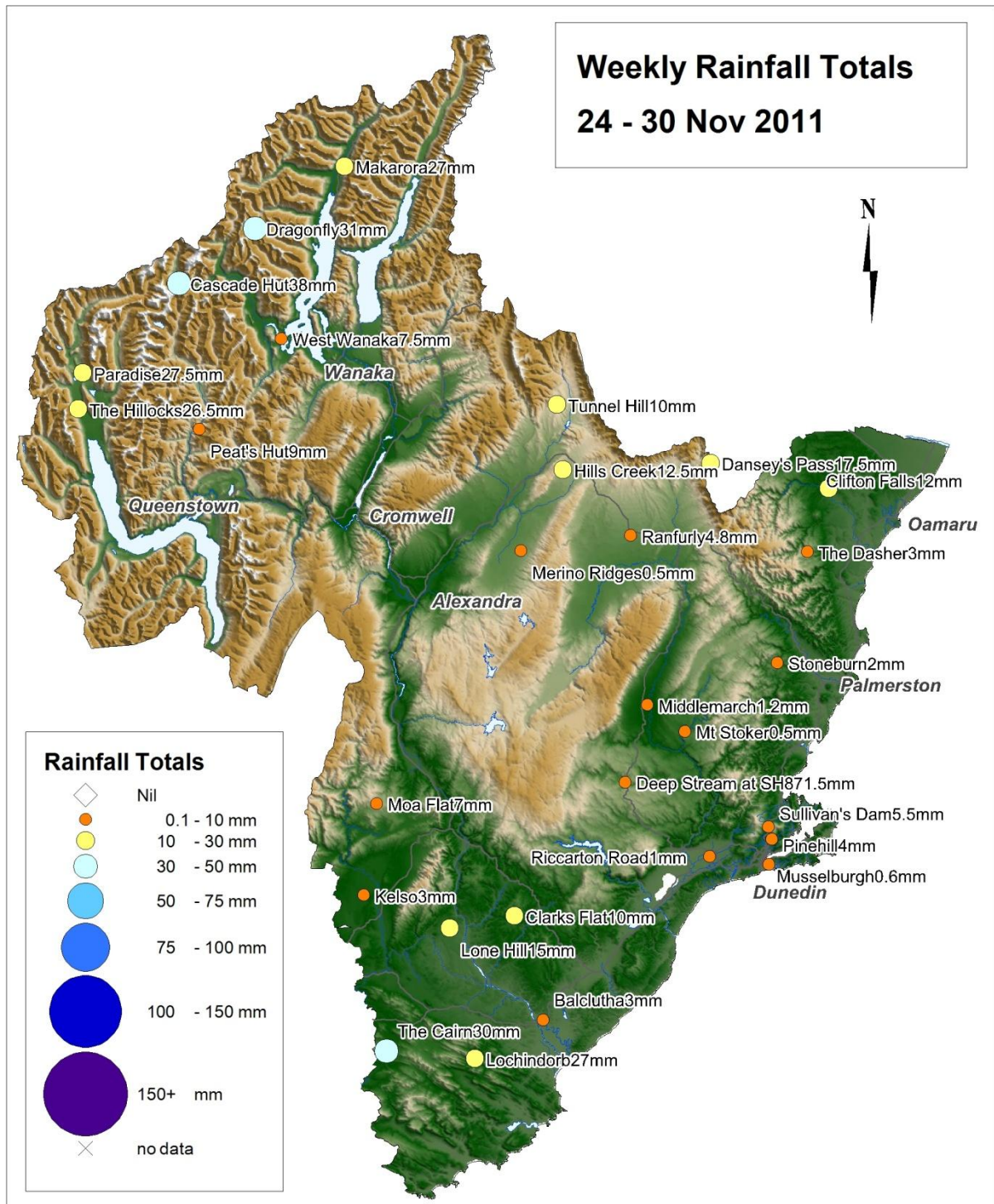
RAINFALL & RIVER FLOW W E E K L Y R E P O R T O T A G O R E G I O N A L C O U N C I L

Thursday 24 November 2011 – Wednesday 30 November 2011

Described below is the weekly rainfall totals recorded at selected rain gauges and the average weekly flow in Otago's main rivers for the week ending at midnight on 30 November 2011.

Rainfall

More rainfall was received along the main divide and South Otago compared to elsewhere in the region. The highest rainfall total was recorded at Cascade Hut with 38 mm. The least amount of rainfall was received at Mt Stoker and Merino Ridges, both with a half millimetre.



River Flows

Dunstan Creek at Beatties Road, the Waipahi River at Waipahi, and all flow sites in North Otago and Dunedin recorded well above normal flows for this time of year. Flows in the Shotover River and the Clutha River at Cardrona Confluence were below normal, with 24 cumecs and 238 cumecs recorded for the week.

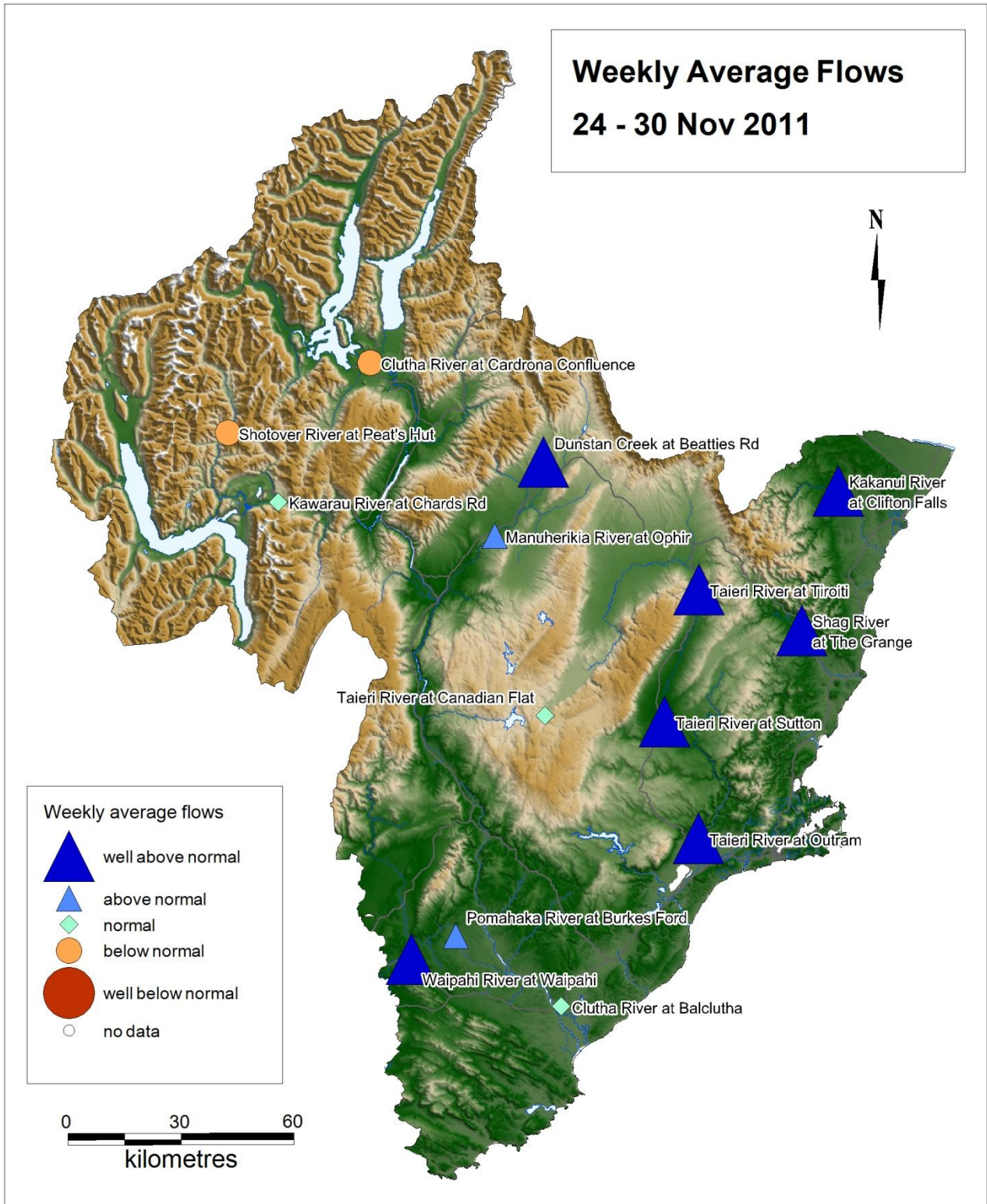
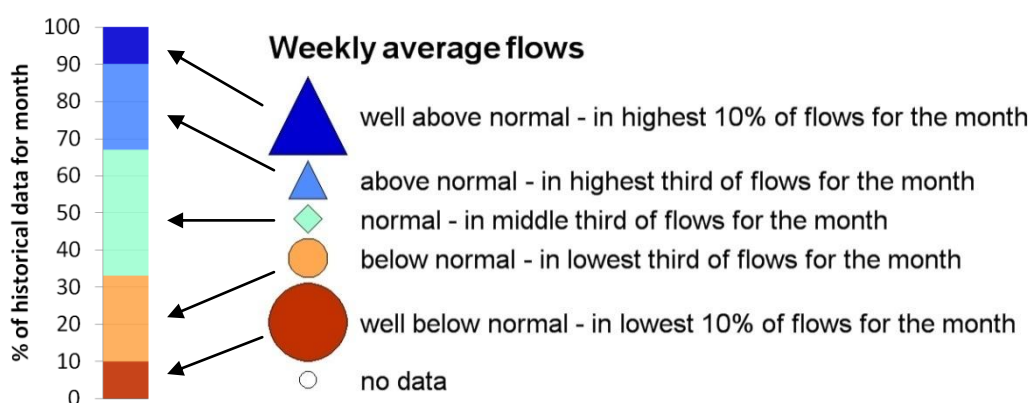


Table 1. River flow information for Otago’s main rivers (all flows in cumecs, m³/s)

River and Site Name	Weekly Average	Minimum	Maximum	Class
Kakanui River at Clifton Falls	5.440	2.478	29.709	well above normal
Shag River at The Grange	3.964	1.863	14.194	well above normal
Taieri River at Canadian Flat	3.992	2.399	12.562	normal
Taieri River at Tiroiti	37.700	21.855	53.380	well above normal
Taieri River at Sutton	42.233	27.000	56.981	well above normal
Taieri River at Outram	56.261	34.803	72.776	well above normal
Clutha River at Balclutha	650.120	440.081	803.881	normal
Waipahi River at Waipahi	9.395	5.454	14.204	well above normal
Pomahaka River at Burkes Ford	37.887	20.833	65.837	above normal
Manuherikia River at Ophir	29.871	18.004	50.178	above normal
Dunstan Creek at Beatties Rd	14.115	11.855	17.764	well above normal
Clutha R. at Cardrona Confluence	238.150	222.075	247.866	below normal
Kawarau River at Chards Rd	251.153	233.585	285.895	normal
Shotover River at Peat’s Hut	24.119	17.688	55.015	below normal

Weekly average flow classes

To give a better representation of how the weekly average flow compares to our historical records, we use flow classes. If a flow falls in the middle third of the historical flow recorded for that month we’ve called it a “normal” flow. If it falls in the top third of flows we call it “above normal” and likewise if in the bottom third, then “below normal”. If it is in the top or bottom 10% of flows then we change this to “well above” or “well below”, respectively. The divisions of flow are somewhat arbitrary but they do give a better indication of the state of the river than was previously reported. We use the word “normal” because using “average” for both the weekly flow and the historical average flow can be confusing and we’ve used it descriptively not definitively.



Acknowledgement

Information for this report is provided by the Otago Regional Council, National Institute of Water & Atmospheric Research Ltd, Environment Canterbury and Trustpower Limited.

Further Information

For more information on rainfall and river flows in the Otago Region use the Water Info flow phone and website service. tel:0800 426 463 or go to www.orc.govt.nz/waterinfo
To request flow or rainfall data email environmental.info@orc.govt.nz

Mailing list

This report is available online or by email. To update your contact details on our mailing lists, please email: environmental.info@orc.govt.nz, or tel: 0800 474 082.