

Didymo Partner and Stakeholder Update



DATE 26 June 2008

The purpose of this update is to keep you informed about the work underway in support of the didymo long-term management partnership.

Responsibility for didymo programme management

From 1 July the didymo long-term management (LTM) programme and associated activities will formally become the responsibility of MAF Biosecurity New Zealand's Pest Management Group. John Sanson, National Coordination Manager, and Corinna Bennett, Didymo LTM Coordinator, will be the key people within the Pest Management Group providing coordination support to the programme partners. They will also be supported by Fiona Bancroft, a senior adviser within the Pest Management Group. Jeff Donaldson and Steve Smith continue as South and North Island Operations Managers, and Matthew Thorpe will continue to provide communications and media services.

From 1 July the key contacts within MAFBNZ will be:

Name	Role	Area of responsibility	Phone	Email
John Sanson	National Coordination Manager, Pest Management Group	Programme Manager	04 894 0836	john.sanson@maf.govt.nz
Corinna Bennett	Long-Term Management Coordinator	Point of contact for regional groups and coordination of partner-related activities	04 894 5534 029 894 5534	corinna.bennett@maf.govt.nz
Fiona Bancroft	Senior Adviser, Pest Management Group	Acting Programme Manager 7 July – 15 August	04 894 0014	fiona.bancroft@maf.govt.nz
Matthew Thorpe	Marketing Adviser	Distributing public awareness material	04 894 0276 029 894 0436	matthew.thorpe@maf.govt.nz
Jeff Donaldson	South Island LTM Operations Manager	Support of South Island regional group operations and planning	027 435 7162	jeff.donaldson@orc.govt.nz
Steve Smith	North Island LTM Operations Manager	Support of North Island regional group operations and planning	021 888 669	steve@upstreamservices.co.nz

Note: John Sanson will be on leave from 7 July until 15 August, so during that time please contact Fiona Bancroft who will be acting programme manager.

Didymo research completed

MAFBNZ has now completed its didymo research programme.

Gemex™ Impact on Non-Target Species

Gemex™ concentrations were assessed for the short term effects of Gemex™ on a range of non-target species. The toxicity data showed that sensitivity to Gemex™ increased as exposure times and Gemex™ concentration increased, with amphipods being the most sensitive of the species tested, followed by trout and bullies.

Water hardness also had a significant influence on copper toxicity to non-target species with survival being greatest at higher water hardness levels. Predictions were that even in soft



BIOSECURITY NEW ZEALAND

Ministry of Agriculture and Forestry

Te Manatu Ahuwhenua, Ngaherehere

Pastoral House, 25 The Terrace, PO Box 2526, Wellington, New Zealand

Telephone: 64 4 819 0100 Facsimile: 64 4 819 0731 Web: www.biosecurity.govt.nz

water there would be minimal impact on dwarf galaxias, koura and snails. It remains unknown whether increased water hardness will decrease the toxicity of Gemex™ to didymo.

There was no significant bioaccumulation of copper in adult koura exposed to high concentrations of Gemex™ for up to 8 hours, suggesting that risks to humans and other predators consuming koura after a Gemex™ treatment of a waterway is likely to be minimal.

Long time effects of Gemex™

An assessment of long term (10-11 months post -treatment) effects of Gemex™ was undertaken at the site of the small river trial of early 2007. The review found that there was no evidence of long-term adverse effects of a single dose of Gemex™ on the non-target species tested. Although trout were affected in the short-term, trout densities had returned to near pre-treatment levels 11 months afterwards. Copper concentrations in the water and fish were also within acceptable drinking water, human health and protection of ecosystems guidelines by this time.

Multiple doses of Gemex™ should be more effective than a single dose but may also elevate impacts on non-target species. This needs to be taken in to account when considering the use of Gemex™ to control didymo in a river or stream.

Didymo-Gemex™ decision support tool

A decision support system has been developed to assist regions wishing to assess the feasibility of the use of Gemex™ in specific waterways.

Didymo knowledge sharing tools in place

The didymo knowledge sharing project is now complete. The project has delivered three tools.

The quick guide

This hard copy folder provides summaries of key information for the long-term management of didymo and guidance on how to find the complete set of information.

The electronic library

This web-based tool, didymo.net, contains the authoritative knowledge that is available to be shared amongst didymo long-term management partners to assist them in making management decisions about didymo.

The shared workspace

This is an internet based forum for discussion and informal sharing of information among didymo long-term management partners.

The internet sites are not publicly accessible. Password access is available to those partners who are directly involved in the management of didymo. Applications for access should be made to Corinna Bennett, Didymo Long-Term Management Programme Coordinator, corinna.bennett@maf.govt.nz

Communications update

The MAFBNZ communications team attended the Hutchwilco Boat Show in Hamilton last month. This was very successful, with the Check, Clean, Dry message very well received.

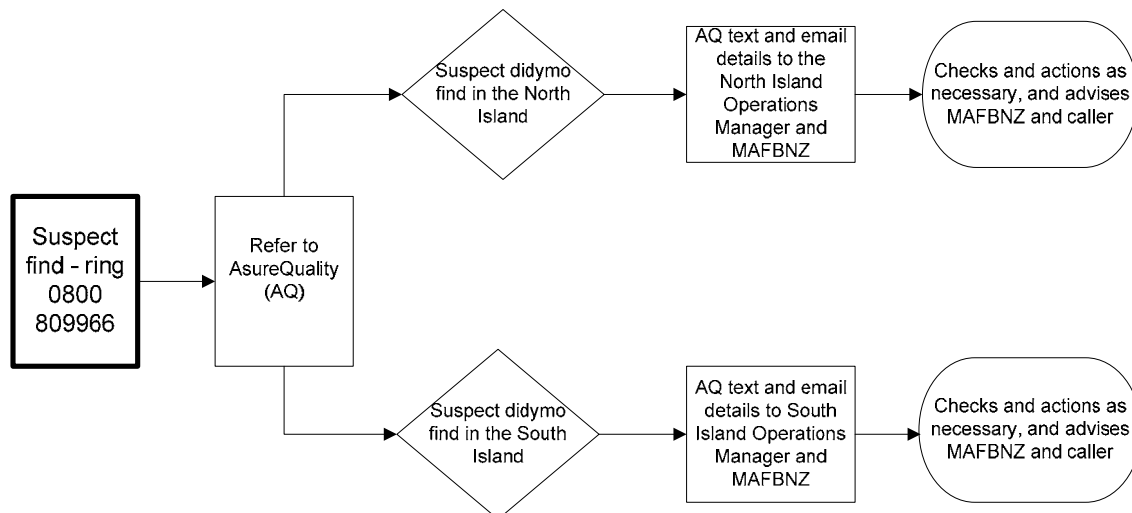
Next month we will be attending the Christchurch Boat show. We think this is an important event to attend as it mainly attracts trailer boat owners.

The ACNeilson didymo summer campaign evaluation is due for completion at the end of July. Partners will receive an outline of the results. The results will give us an indication of areas that are working well, and areas that need more attention. This information will be valuable when planning your upcoming summer programmes.

The didymo social marketing material will again be available this financial year. We are planning on refreshing some of the items such as the brochure; however the messages will stay the same.

Process for reporting suspected didymo finds

The following flow chart illustrates the process for when a member of the public has a suspected didymo find. It is important that if a member of the public reports a suspect find to your organisation, either they or your organisation rings the 0800 number to ensure this information is getting to the correct person.



LINZ Topo50 Map Series Project

Land Information New Zealand are developing a new mapping system, which may be of interest to partners. This will have implications for the didymo samples database, but MAFBNZ will be working through these. For more information, please go to the LINZ website:

<http://www.linz.govt.nz/core/topography/projectsandprogrammes/topo50/about/index.html>

For more information about didymo visit our website at www.biosecurity.govt.nz

To report an exotic pest or disease, call the MAF Emergency Pest and Disease Hotline:
0800 80 99 66

If you do not wish to receive these updates please email didymo@maf.govt.nz with 'Unsubscribe' in the subject line.